



AMERICAN Ductile Iron Specials

AMERICAN Flange Adaptor for AWWA C110/C115 Flange to ASME B16.1 Class 250# Flange AMERICAN Standard

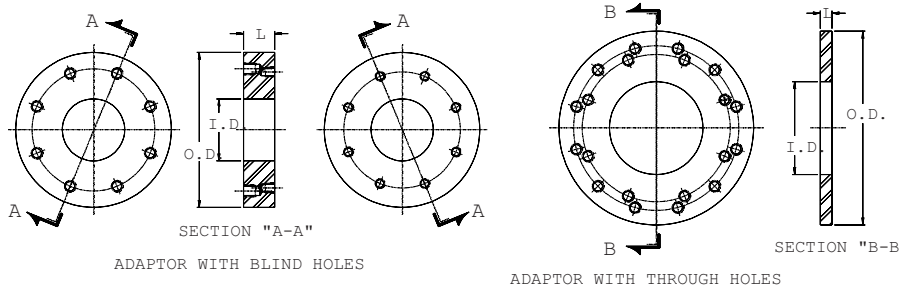


Table No. 7-6

Size in.	Outside Diameter in.	Inside Diameter in.	Length "L" in.	Tap Depth		Weight lb
				C115 Flange in.	B16.1 Class 250 Flange in.	
4	10.00	4.00	2	3/4	7/8	37
6	12.50	6.00	1	Through	Through	27
8	15.00	8.00	1	Through	Through	36
10	17.50	10.00	2 1/2	7/8	1	115
12	20.50	12.00	2 1/2	7/8	1 1/8	154
14	23.00	14.00	2 1/2	1	1 1/8	186
16	25.50	16.00	2 3/4	1	1 1/4	242
18	28.00	18.00	2	Through	Through	205
20	30.50	20.00	3	1 1/8	1 1/4	355
24	36.00	24.00	3 1/4	1 1/4	1 1/2	522
30	43.00	30.00	2 1/2	Through	Through	529
36	50.00	36.00	4	1 1/2	2	1141
42	57.00	42.00	4	1 1/2	2	1408
48	65.00	48.00	3	Through	Through	1285

Material is ASTM A36 steel.
 Holes are drilled and tapped to mate with AWWA C110/C115 flanges on one side and ANSI/ASME B16.1 Class 250 flanges on the opposite, or other side.
 Holes are equally spaced straddling centerline.
 12"-30" flange adaptors and 36"-48" flange adaptors are tapped at top dead center for 5/8" and 3/4" (5/8-11 UNC and 3/4-10 UNC threaded) lifting eyes, respectively.